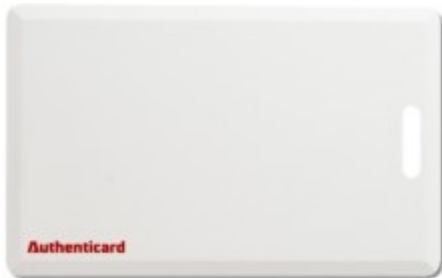


A-CLAM

A-CLAM Robust Clamshell Card



Designed specifically for access control systems, A-CLAM is the ideal choice for harsh applications where a robust Access Control ID card is required.

DESIGN

- A Durable ABS Construction
- A Standard ID-1 Length and Width
- A Integral Vertical Slot-Punch For Lanyards
- A Available with a choice of technologies

OPTIONS

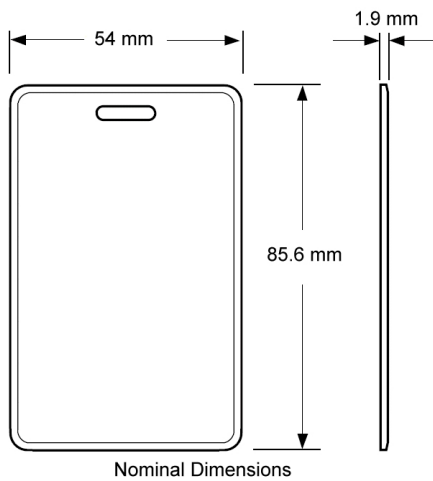
- A Available in 125KHz & 13.56MHz Models



TECHNOLOGIES

- A 125KHz Proximity
- A MIFARE
- A DESFire
- A Authentifire
- A Legic

TECHNICAL INFORMATION



A-CLAM SPECIFICATIONS	
Technology	RFID
Net Weight	9 g
Nominal Dimensions	85.6mm x 54mm x 1.9mm
Operating Temperature	-25°C to 55°C
Protection Rating	IP66
Casing Material	ABS Hard Shell with PVC Cover Label
Colour	White
Finish	Matt

Authenticard Readers and Tags



Authenticard Limited
St. John's Innovation Centre
Cowley Road
Cambridge CB4 0WS
United Kingdom

Tel: +44 (0)1223 398 900
email@authenticard.com

www.authenticard.com

 **Authenticard**
Access Excellence